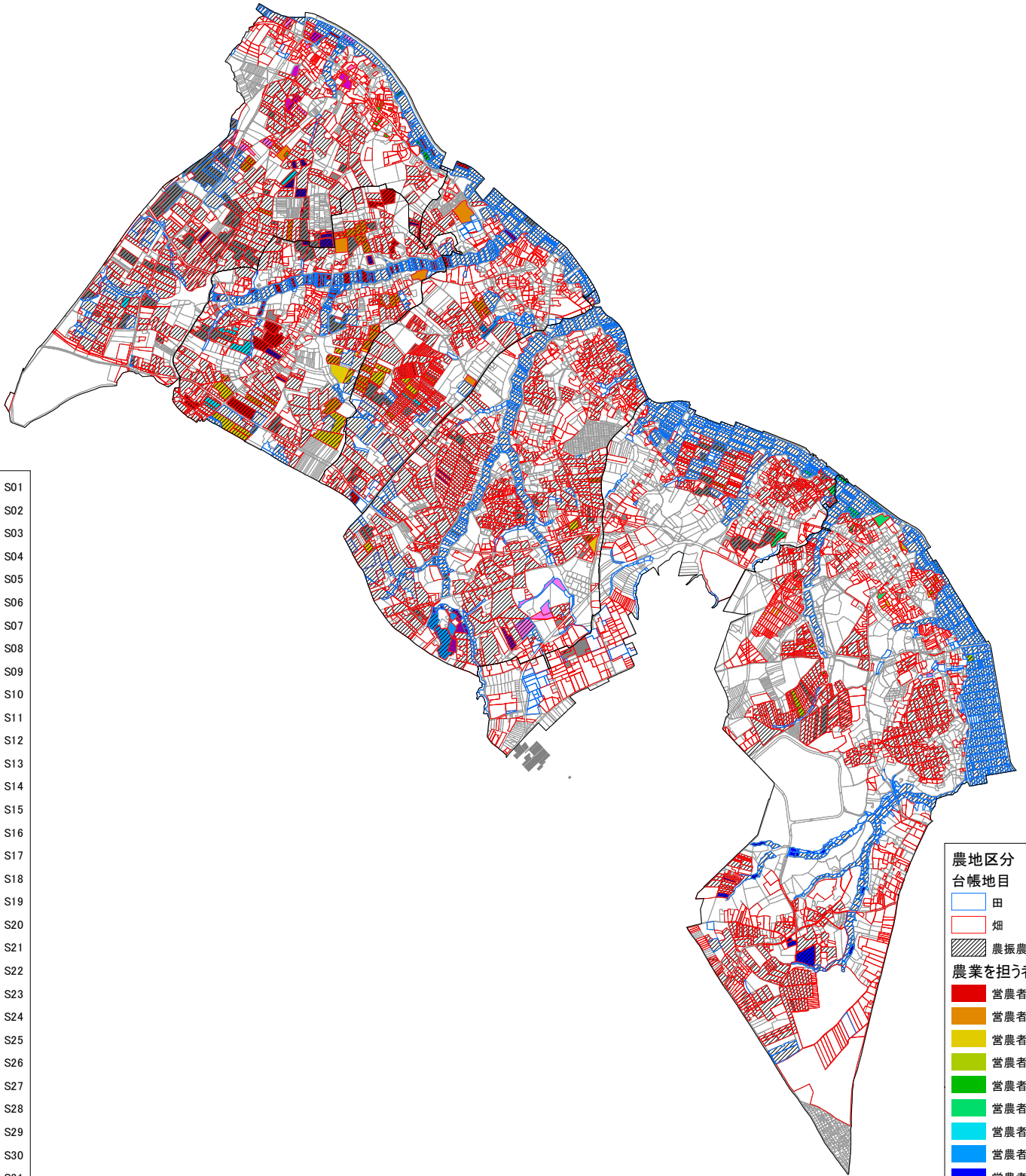


白河地区



- S01
- S02
- S03
- S04
- S05
- S06
- S07
- S08
- S09
- S10
- S11
- S12
- S13
- S14
- S15
- S16
- S17
- S18
- S19
- S20
- S21
- S22
- S23
- S24
- S25
- S26
- S27
- S28
- S29
- S30
- S31
- S32
- S33
- S34
- S35
- S36
- S37

- 農地区分
台帳地目
- 田
 - 畑
 - 農振農用地
- 農業を担う者
- 営農者A
 - 営農者B
 - 営農者C
 - 営農者D
 - 営農者E
 - 営農者F
 - 営農者G
 - 営農者H
 - 営農者I
 - 営農者J
 - 営農者K
 - 営農者L
 - 営農者M
 - 営農者N
 - 営農者O

1:15,000

0 310 620 1,240 1,860 2,480 3,100 m